

# Sorting and Case Packing Solutions for Pouches

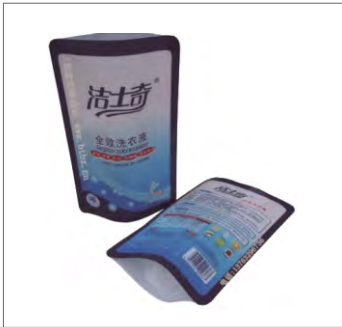
Our *pouch sorting and case packing systems* are engineered to meet these demands, offering advanced solutions that streamline your packaging process. Pouch sorters intelligently organize products for optimal workflow, while our case packers automate the processes of case forming, pouch loading, and case sealing, ensuring consistent and reliable packing. Together, these systems enhance productivity and reduce operational costs, empowering your business to thrive in a fast-paced environment.



**Calmus**  
MACHINERY

## 1. APPLICABLE PRODUCTS

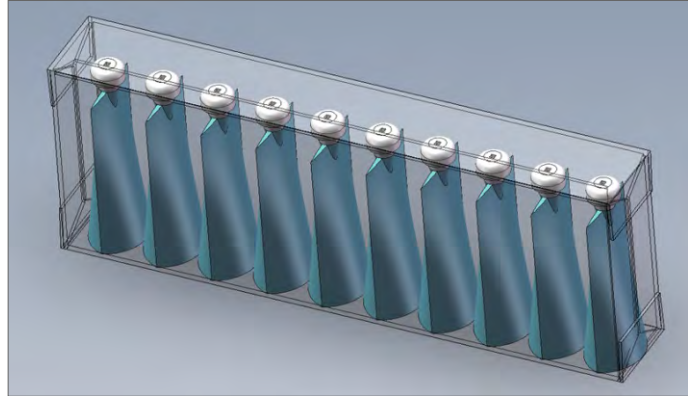
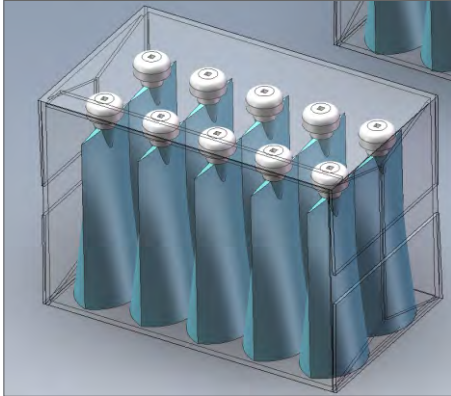
Spoutless or Spouted Pouches / Doypacks, as shown as below.



## 2. PACKING PATTERNS







### 3. PRODUCTION CAPACITY

#### 3.1 SORTING CAPACITY

- > Low-Speed Range: 50-80 pouches/min;
- > Medium-Speed Range: 80-150 pouches/min;
- > High-Speed Range: 150-200 pouches/min.

#### 3.2 CASE PACKING (FORM-LOAD-SEAL) CAPACITY

- > Low-Speed Range: 3-5 cases/min;
- > Medium-Speed Range: 7-10 cases/min;
- > High-Speed Range: 12-15 cases/min.

### 4. APPLICABLE CASES



Regular Slotted Cartons



Lock-Bottom Boxes



One-Piece Folder Boxes



US Style Display Cases

### 5. CASE SEALING METHODS



Adhesive Tape



Hot-Melt Glue

### 6. TECHNICAL PARAMETERS

<b>Pouch Sorting Method</b>	By Dual Servo
<b>Packing Type</b>	Side Loading
<b>Applicable Products</b>	Regular, Strip, Rectangular, and Special-shaped Pouches
<b>Applicable Pouch Dimensions</b>	L 50-280 mm, W 20-200 mm, H 5-100 mm
<b>Power Supply</b>	Customized
<b>Compressed Air</b>	0.6-0.8 Bar

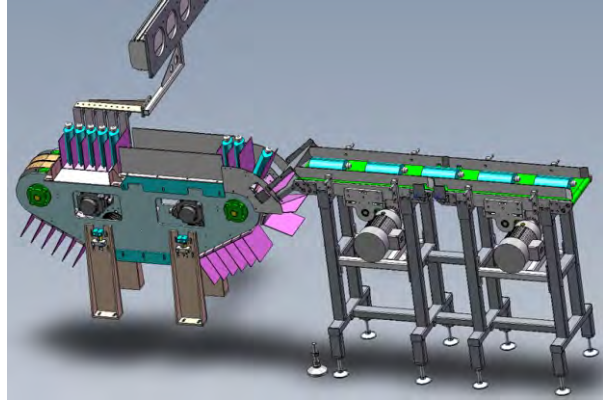
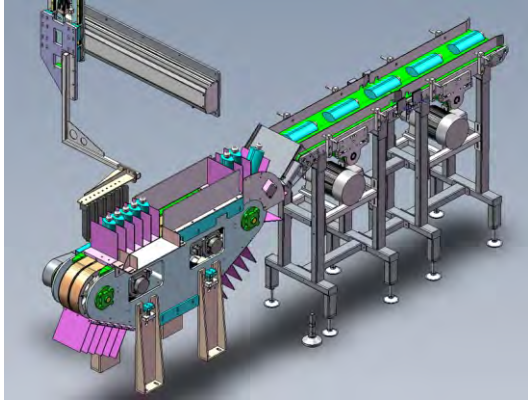
### 7. MAIN CONFIGURATION

<b>PLC/HMI</b>	Mitsubishi/Siemens
<b>Servo and Servo Motors</b>	Mitsubishi/Siemens
<b>Motors</b>	CPG/SEW
<b>Pneumatic Components</b>	AirTAC or Customized
<b>Safety Switches</b>	SICK or OMRON
<b>Low Voltage Components</b>	Schneider
<b>Guide Rails</b>	HIWIN or AirTAC
<b>Frame Material</b>	Coated Carbon Steel or 304 Stainless Steel

## 8. MACHINES

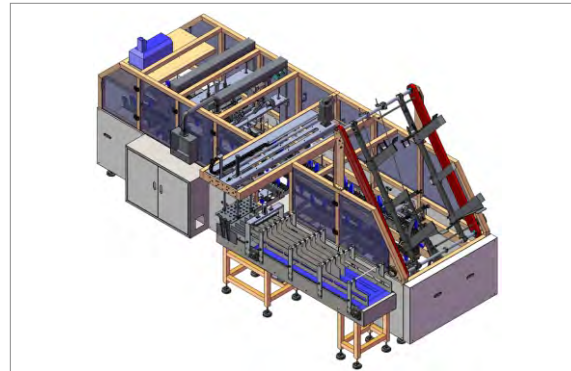
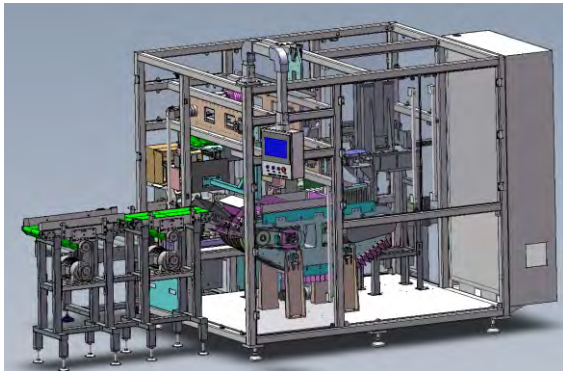
### 8.1 Dual Servo Pouch Sorter

The patented fully automatic high-speed sorting machine mainly consists of the following sections: buffering belt conveyor, acceleration belt conveyor, dual servo sorter, servo side pusher, buffering storage, and electrical control.



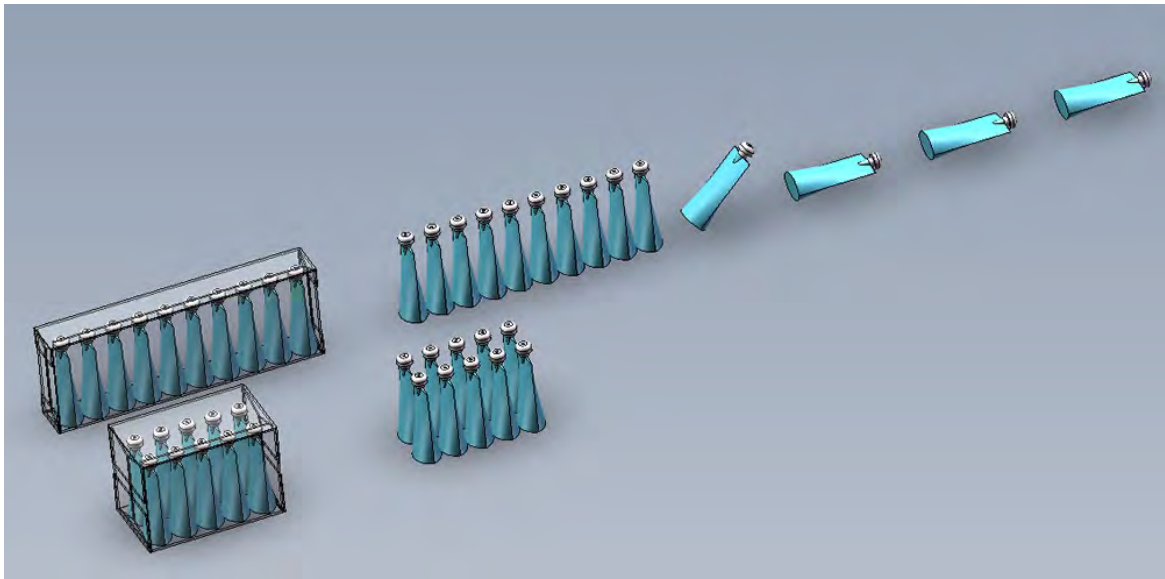
### 8.2 Form-Load-Seal Monoblock Case Packer

The side-load type forming, loading, and sealing 3-in-1 machine mainly consists of the following sections: carton blank storage shelf, case forming, rear-flap folding, pouch side loading, front-flap folding, hot melt glue spraying (or adhesive tape application), case exiting and top side-flaps closing, case turning, weight checking, and electrical control.

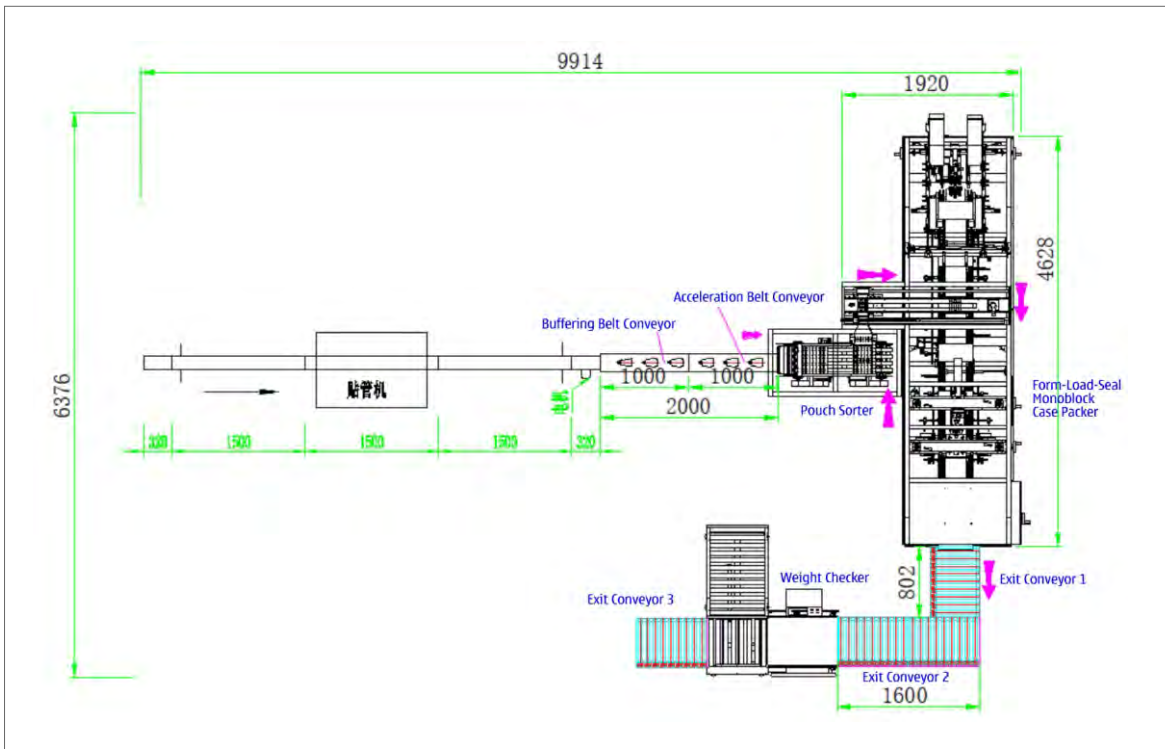




## 9. FLOWCHART



## 10. LAYOUT





**Calmus Machinery**

3/F, Building 6, Sangtai Industrial Park, Liuxiandong, Xili  
Nanshan District, Shenzhen 518055, CHINA

T: (+86-755) 2803 3527

F: (+86-755) 2803 3601

E: info@brentorma.com

[www.CalmusBaginBox.com](http://www.CalmusBaginBox.com)

[www.CalmusMachinery.com](http://www.CalmusMachinery.com)